

BUEHLER®

ViewMet™

INVERTED LABORATORY METALLOGRAPH

- **Affordable Inverted Stage Microscope for Laboratory Use**
- **6V/30W Köhler-type Illumination System**
- **Bright, Crisp, Flat Field Images**
- **Five Position Nosepiece Turret**
- **CCTV Ready Trinocular Head**

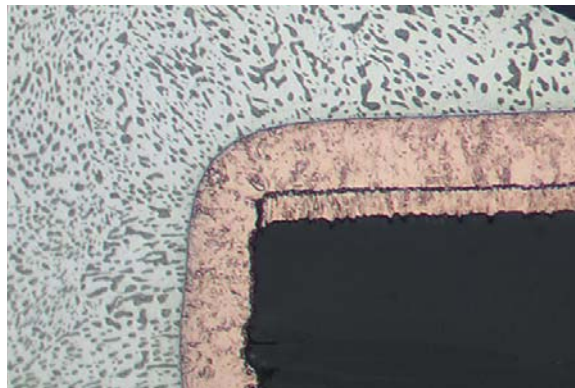


Performance & Value At Your Command

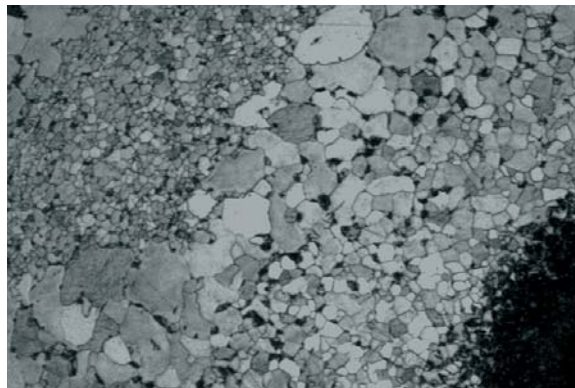
The Buehler ViewMet™ inverted laboratory metallograph provides an exceptional solution for routine materials laboratory needs. This affordable instrument incorporates a camera ready trinocular head with included c-mount adapter and rack and pinion X-Y stage, poised to document mounted, unmounted and irregularly shaped samples.

The ergonomic, solid cast base allows viewing of images at even high magnification without fear of vibration interference. The focusing mechanism boasts both a tension control and coarse position lock. All microscope functions are easily controlled without looking away from the eyepieces.

The Plan Achromat, brightfield objectives and 6V/30W Köhler type halogen illuminator combine to deliver bright, well-resolved images to either the 10x wide field eyepieces or the c-mount camera of your choice.



Printed circuit board cross-section.



Duplex Grain Structure.



10x WF Eyepieces
with 20mm field of
view and diopter
adjustment

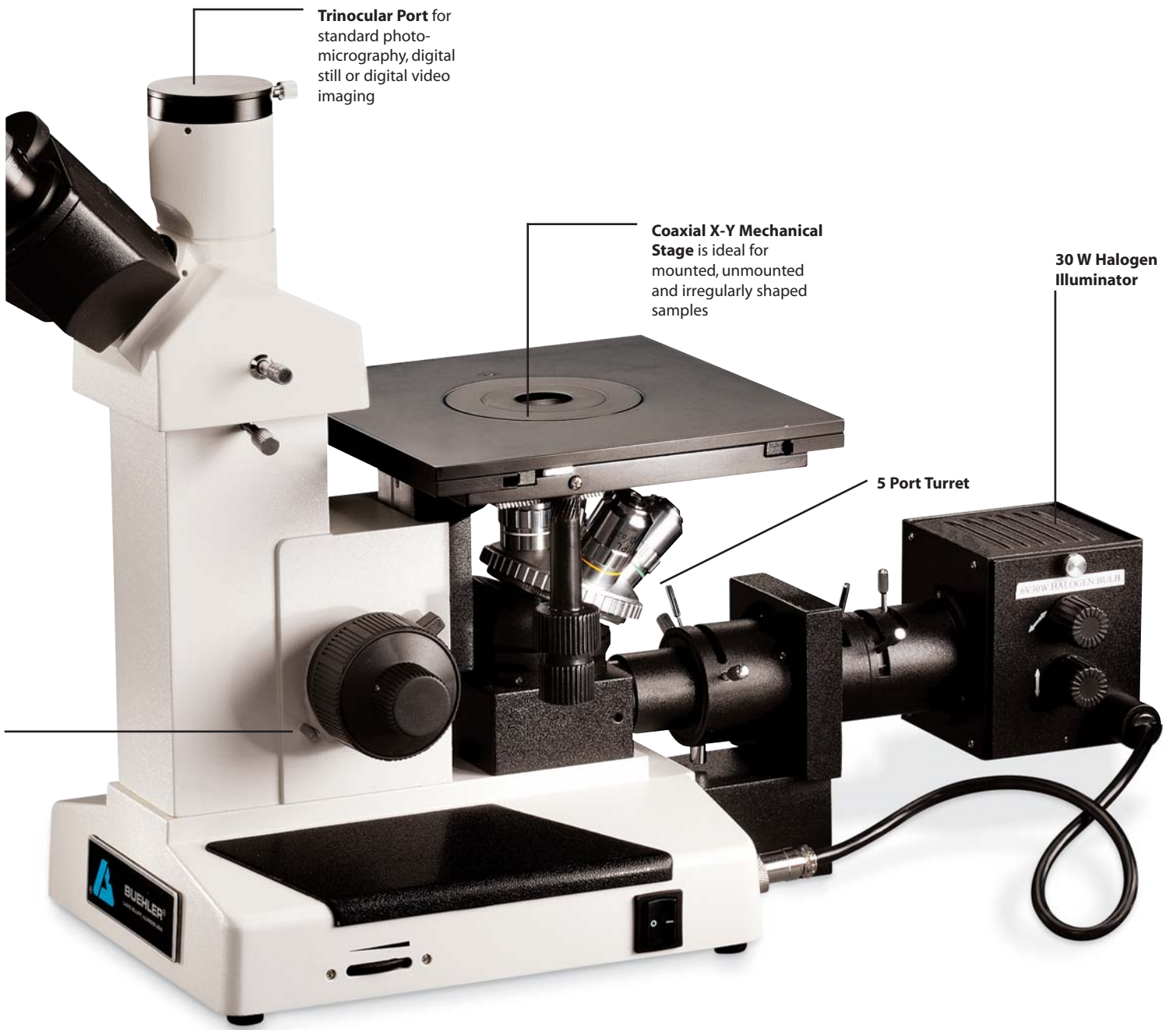
Coaxial Coarse and



Video camera accessory for digital image capture and analysis with the OmniMet® system.



Trinocular body tube and included c-mount.



Trinocular Port for standard photomicrography, digital still or digital video imaging

Coaxial X-Y Mechanical Stage is ideal for mounted, unmounted and irregularly shaped samples

30 W Halogen Illuminator

5 Port Turret



Included filter set.



Plan achromat brightfield objectives.

Buehler ViewMet Laboratory Metallograph Specifications

0760-0100 Buehler ViewMet Inverted Laboratory Metallograph consisting of a stand with trinocular head and c-mount, coaxial mechanical stage with two inserts, 6V/30W illuminator, a pair of 10X eyepieces, 5x, 10x, 20x and 50x Plan Achromat objectives, diffusion, yellow, green and blue filters, a power cord, instruction manual and vinyl dust cover

Component	Description
Optical System	160mm fixed mechanical tube length with 45mm Parfocal distance
Main Body	Square box type metal casting
Focusing Mechanism	Vertical movement via stage
	Coarse: 20mm/rotation
	Fine: 2µm/graduation
Trinocular Eyepiece Tube	Siedentopf-type trinocular tube with optical changeover for 100% observation or 100% to video port
Turret	Quintuple (5 port) backward facing
Stage	Size: 180mm x 180mm
	Controls: X-Y Coaxial
	Travel: 15mm x 15mm
Power supply	Built-in 110V/220V selectable
Illumination	Tungsten Halogen 6V/30W Brightfield, Köhler type
Eyepieces	10X WF with 20mm field of view
C-Mount Adapter	1X
Overall Dimensions without camera	14.6" H X 8" W X 21.25" D (370mm x 200mm x 540mm)
Shipping Information	Packed Dimensions: 24" H X 14" W X 18" D (610mm X 356mm X 458mm) Weight: 20lb(9kg)

Brightfield Objectives*		NA 1.25, oil, W.D. 0.36mm	
0750-0005	5X Plan Achromat Objective Lens, NA 0.12, W.D. 18.30mm	Accessories*	
0750-0010	10X Plan Achromat Objective Lens, NA 0.25, W.D. 8.9mm	0755-0025	Micrometer Eyepiece Reticle, 10µm/10mm
0750-0020	20X Plan Achromat Objective Lens, NA 0.40, W.D. 8.7mm	0755-0030	Grain Size Reticle
0750-0050	50X Plan Achromat Objective Lens, NA 0.70, W.D. 2.02mm	0755-0165	Blue Filter
0750-0080	80X Plan Achromat Objective Lens, NA 0.8, W.D. 0.96mm	0755-0155	Green Filter
0750-0100	100X Plan Achromat Objective Lens,	0755-0160	Yellow Filter
		0755-0150	Diffusion Filter
		0755-0011	10X Eyepiece, diopter adjustable with reticle holder (required when ordering reticle)

*The individual product numbers are for ordering single items on an as needed basis.

For a complete listing of consumables, please refer to our Consumables Buyer's Guide. Buehler continuously makes product improvements; therefore, technical specifications are subject to change without notice.

© 2005 BUEHLER LTD. Printed in U.S.A. 25M0905 FN01282 *For metallurgical equipment produced by BUEHLER LTD. USA



BUEHLER
BUEHLER LTD. - Worldwide Headquarters
 41 Waukegan Road • P.O. Box 1
 Lake Bluff, Illinois 60044-1699 USA
 Tel: 847/295-6500 • Fax: 847/295-7979
 Sales: 1/800/BUEHLER • 1/800/283-4537
 Web Site: <http://www.buehler.com>
 Email: info@buehler.com

BUEHLER GMBH - European and MESA Headquarters
 In der Steele 2 • 40599 Düsseldorf
 Postfach 16 03 55 • 40566 Düsseldorf
 Telefon: (49) 211 974100 • Telefax: (49) 211 9741079
 Web Site: <http://www.buehler-met.de>
 Email: info@buehler-met.de

BUEHLER FRANCE
 Téléphone: 0800 89 73 71
 Télécopie: 0800 88 05 27
 Web Site: <http://www.buehler.fr>
 Email: info@buehler.fr

BUEHLER UNITED KINGDOM
 Telephone: 0800 707 6273
 Fax: 0800 707 6274
 Web Site: <http://www.buehler.co.uk>
 Email: sales@buehler.co.uk

BUEHLER CANADA
 10 Carlow Court, Unit #2
 Whitby, Ontario L1N 9T7
 Telephone: (905) 430-4684 • Fax: (905) 430-4647
 Sales Telephone: 1-800-268-3593
 Email: info@buehler.ca

BUEHLER ASIA
 5/F Vogue Centre
 696 Castle Peak Road
 Lai Chi Kok, Kowloon
 Hong Kong, SAR, China
 Telephone: (852) 2307 0909
 Fax: (852) 2307 0233